

Roof Angel™

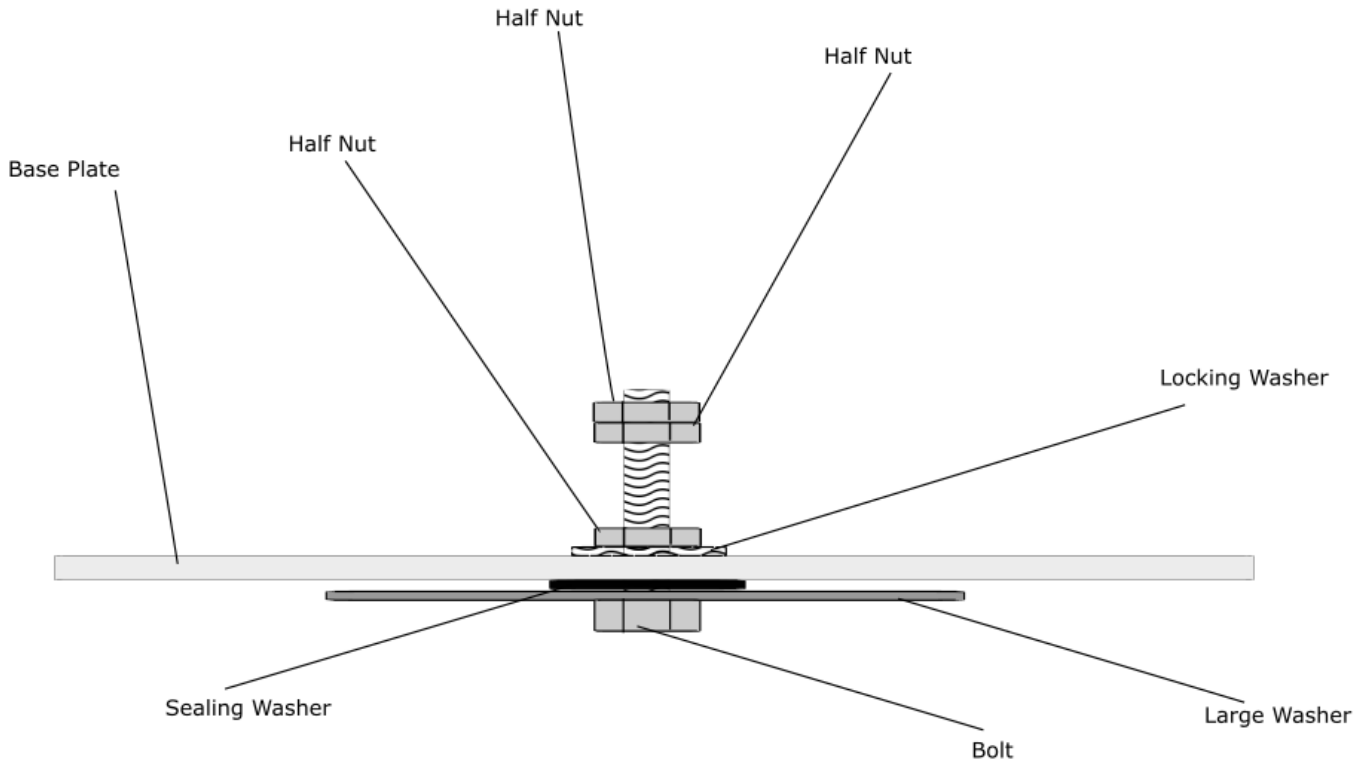
Post / Base Repair Manual

February 2016
Revision 1.0



Replacing Posts

When replacing posts it is imperative that the bolt to which connects the post to the base is re-torqued prior to the post being installed.



Process

1. Place 2 half nuts onto the top of the bolt attached to the plate
2. Lock them together to form one "nut"
3. Using a suitable spanner on the lower nut on the top of the plate and a torque wrench on the 2 locked half nuts torque the lower half nut / bolt assembly to 90Nm
4. Remove the 2 locked nuts and attach the posts
5. Put a bolt into the top of the post and using the torque wrench torque the post to 60Nm
6. Remove the bolt and attach the required Roof Angel component.



UK
Riverside
Mountbatten Way
Congleton
Cheshire
CW12 1DY
United Kingdom

† | + 44 (0) 1260 217 437

NETHERLANDS
Azewijnseweg 12 SF
4214 KC Vuren
The Netherlands

† | + 31(0) 183 820 280

info@bettersafeinternational.com
www.bettersafeinternational.com

